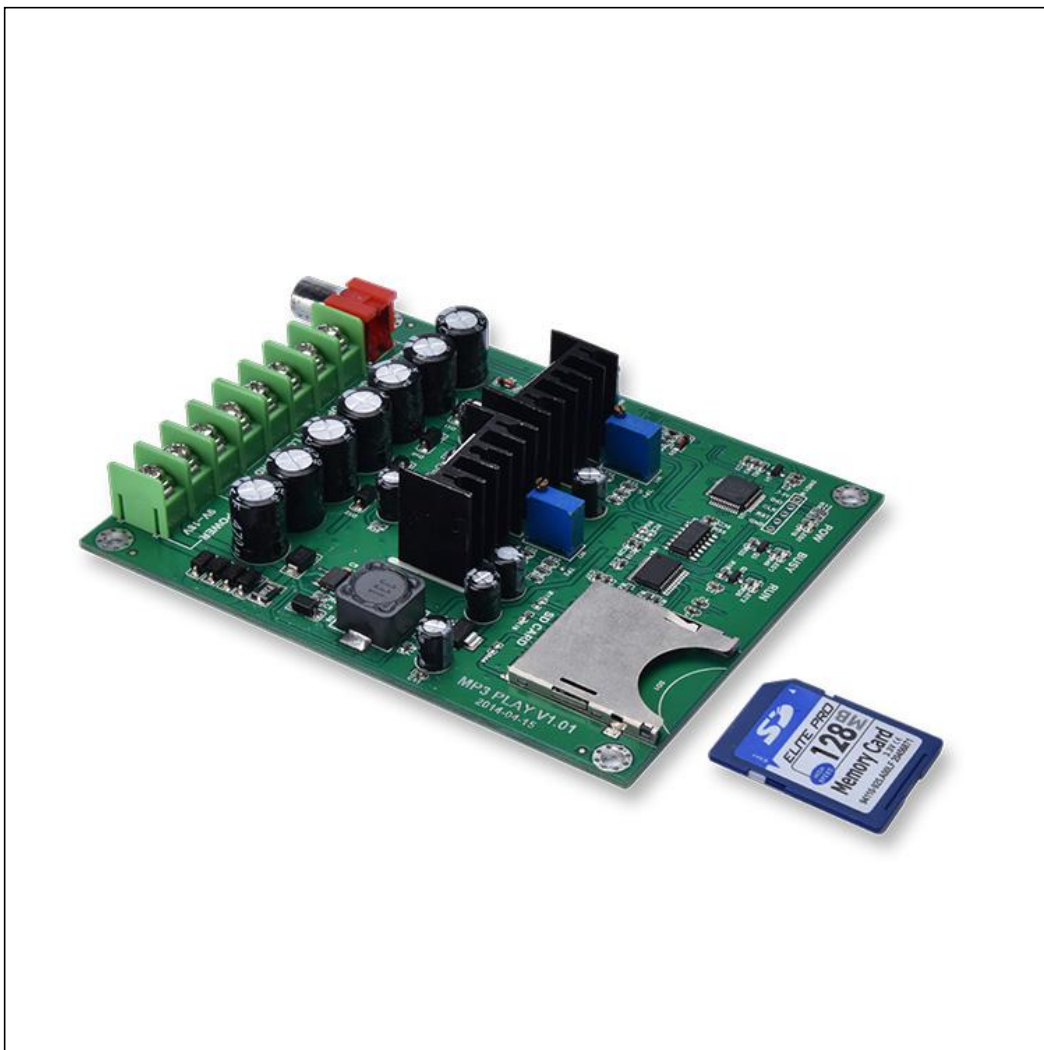


## **SD Card Mp3 Player Board with AUX Line-in**

**Model:MP3 PLAY**



**Figure 1:MP3 PLAY BOARD**



# Shenzhen Cashway Technology Co., Ltd

Tel:86-0755-23704874 Email:krause.yeh@cssiwe.com

Add:2F,Building A ,Cenxia Road, Fenghuang Community,Fuyong Street,Ban'an ,Shenzhen ,518103,China

## 1.Brief Introduction

MP3 PLAY BOARD supports 9-18V wide voltage input, built-in 2X10W amplifier, loud and clear voice, maximum support 32GB SD card to replace the voice, storage voice longer, can be used to play background music, voice prompts, safety alarm and other occasions.

## 2.Features

- DC/AC 9-18V wide range power supply;
- 2X10W stereo output;
- High sound quality MP3 decoding;
- Support up to 32GB SD card;
- One song direct control;
- Support audio AUX line-in;
- volume output adjustable;
- Fast responds according trigger;
- Strong anti-jamming capability;

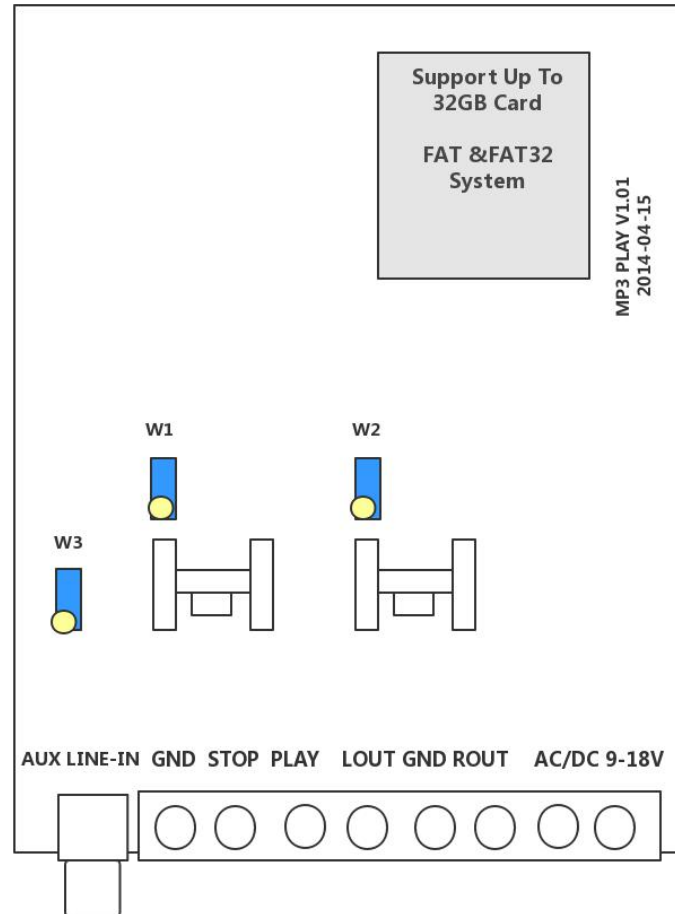
## 3.Application

- Deterring Vandals
- Protecting Property
- Welcome visitors
- Warning off intruders
- Play background music

## 4.Electronic Specification

Power	DC 9~18V/ AC 9~18V
Control	Button/Switch
SD card	Up to 32GB
Amplifier	10W×2 (RL=8Ω d=1%)
AUX Line-in trigger voltage	100mV
Dimension	L*W=110*93mm

## 5.Interface Description



**Figure 2:MP3 PLAY board interface description**

Item	Function	Description
1	AUX LINE-IN	Connect Line-in ,when line-in it will stop play SD card
2	GND STOP PLAY	Pulse trigger stop and GND to stop play, Pulse trigger PLAY and GND to play
3	LOUT GND ROUT	2X10W stereo output
4	AC/DC	DC 9~18V/ AC 9~18V
5	W1	Adjust L-channel volume
6	W2	Adjust R-channel volume
7	W3	Adjust AUX line-in detected level