

# / Installation Environment

The software runs on PCs and devices using Windows 10 operating system.

1. Run the EMS Tools app installation file downloaded from greencell.global or with the use of QR code in the User Guide.

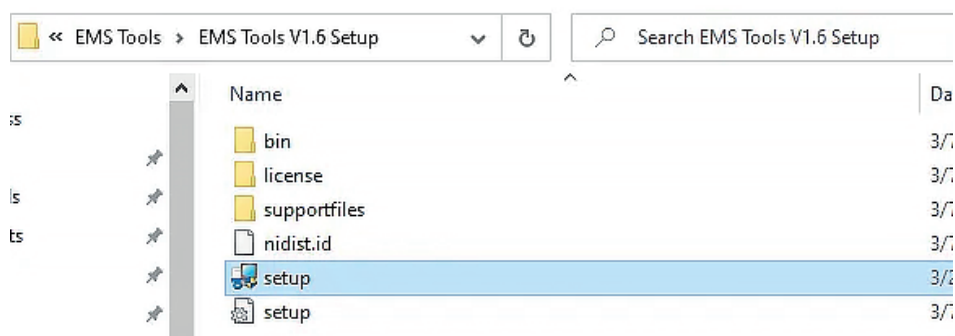


Figure 1 Running EMS Tools installation file

2. Install EMS Tools and National Instruments software (it will be installed in Program Files, by default).

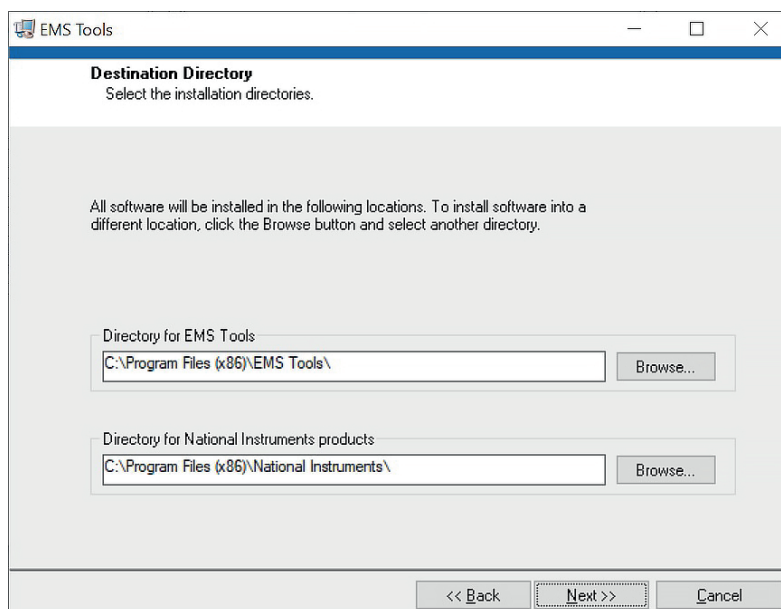


Figure 2 Installing EMS Tools and National Instruments software

3. Once the software is installed, run the application by double-clicking on the app icon.

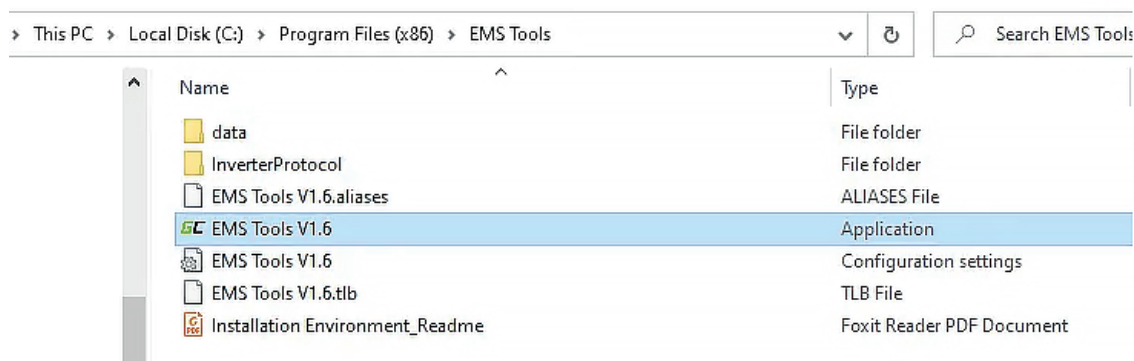


Figure 3 Running the EMS Tools app

### Login

When the app is open, enter the password and click [Log In] to enter the application. You can find the password in the GC EnergyStorage online Installation Guide.

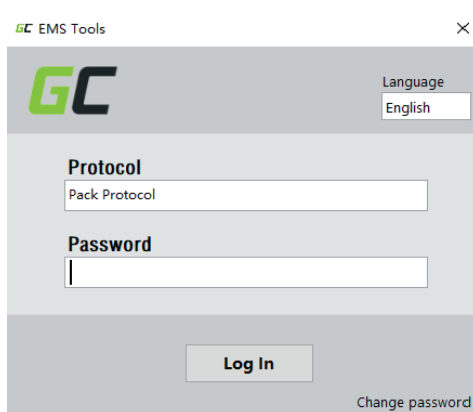
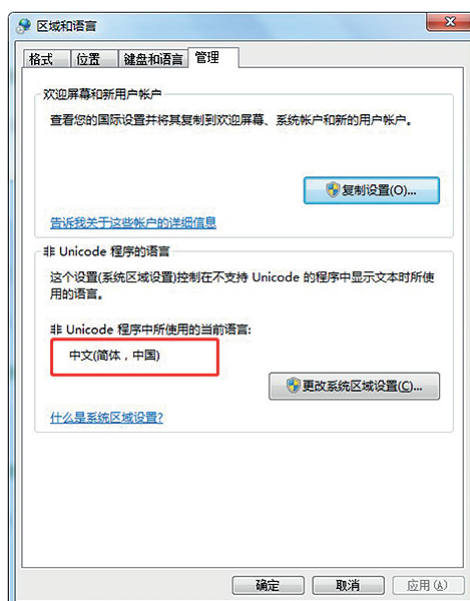


Figure 4 Login window

(The following settings are not required for systems above Win7)

### Non-Chinese version of Win7 display messy code solution

Set the language of non-Unicode programs to: Chinese (Simplified, China) in the Control Panel Region and Language Manager.



**Follow the steps below:**

1. Open the Regions and Languages panel via Control Panel › Clock, Language and Regions.
2. Modify the following configuration:
  - a) Region and Language › Format › select "Japanese" › Apply › "Spanish" › Apply › select "Chinese" again › Apply.
  - b) Region and Language › Location › select "Japan" › Apply › "Spain" › Apply › select "China" again › Apply.
  - c) Region and Language › Administration › Copy Settings › check "Welcome Screen and System Account" › Apply, but do not reboot the system.
  - d) Region and Language › Manage › Change System Regional Settings › select "Japanese" › Apply › "Spanish" › Apply › select "Simplified Chinese" › Apply.
3. After the above settings are modified, reboot the system to solve the Chinese messy code problem.

Control Panel › Clock, Language, and Region › Administrative › Change system locale › Select Chinese (Simplified, PRC).

